

DIAMOND2.0
DURABLE & STRONG SURFACE



**THE TRUE GEM
OF SURFACES
600X1200MM**

LUX
SURFACE

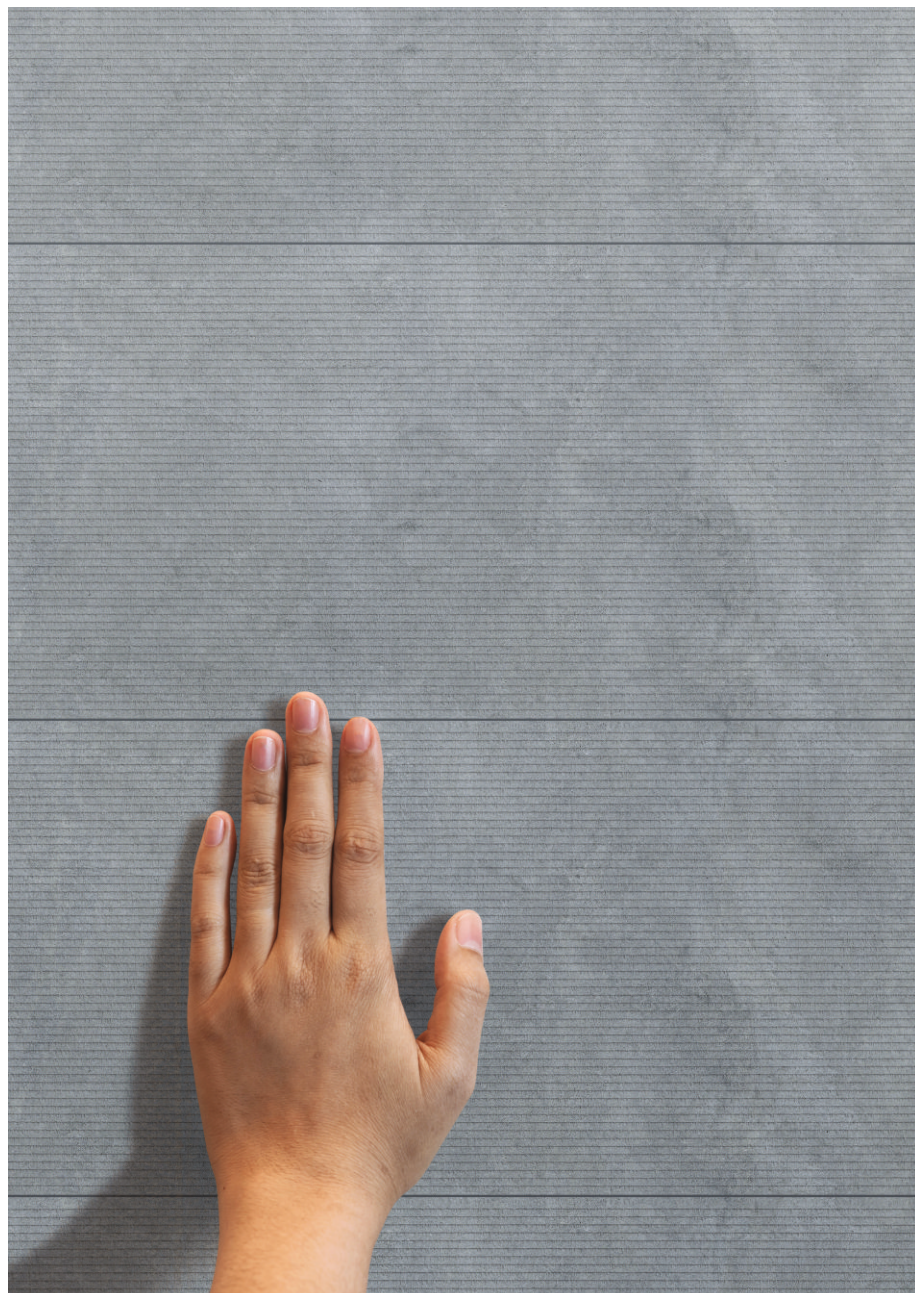
SIMERO[®]
CERAMICS

simero.in

STORY OF DIAMOND

FOR THOSE WHO LOVE PRECISION &
DETAILING LIKE A DIAMOND

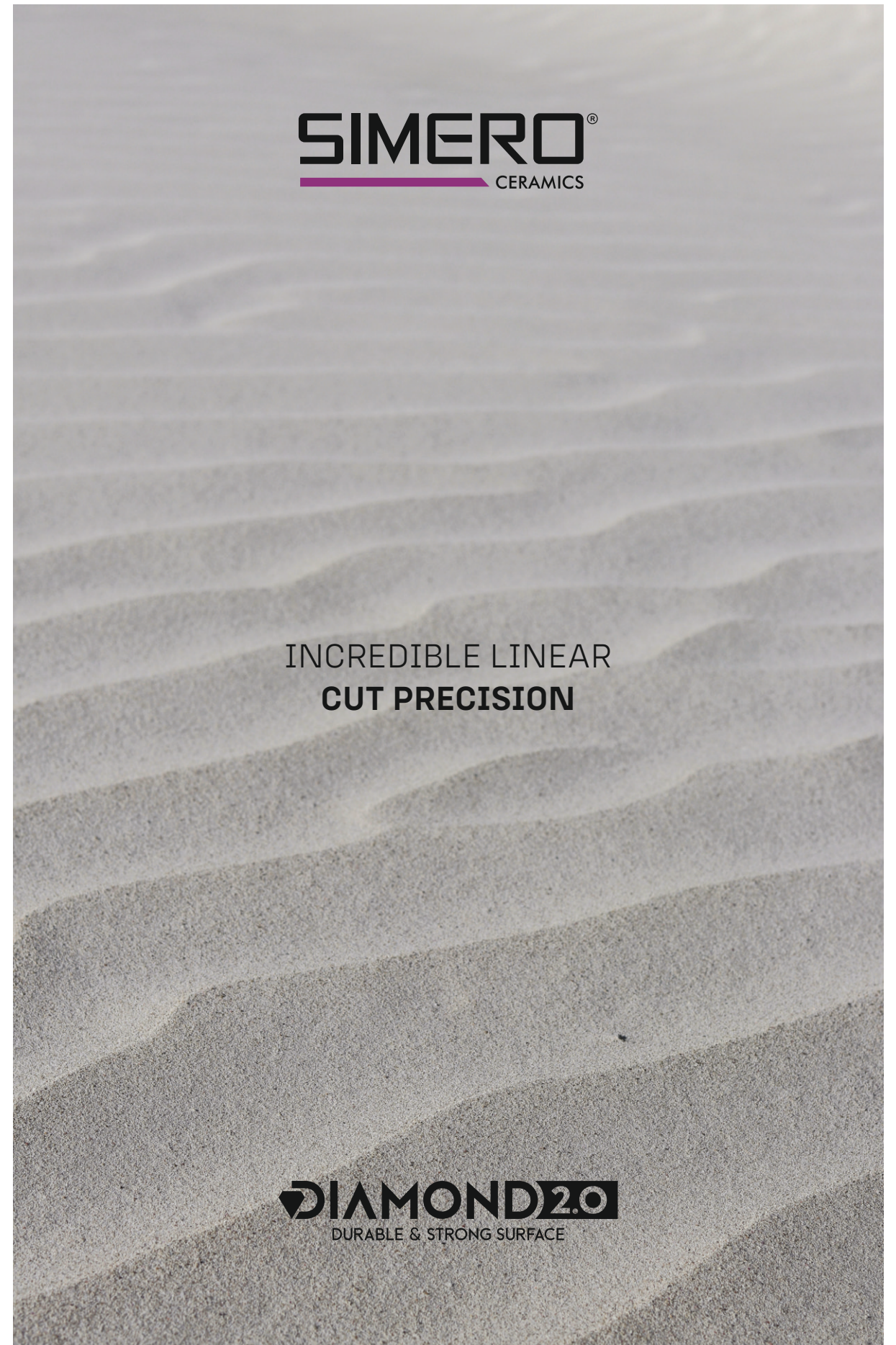
Matt like no other, detailed matt that quietly speaks of class. Diamond 2.0 is not about shine, it is about depth. With punch texture and linear detailing, it creates surfaces architects admire, builders trust, and spaces that stay timeless.



SIMERO[®]
CERAMICS

INCREDIBLE LINEAR
CUT PRECISION

DIAMOND 2.0
DURABLE & STRONG SURFACE





SIMERO®
CERAMICS

**SHAPING ARCHITECTURAL
EXPERIENCES WITH SURFACES MADE
TO FACE THE HARSHTEST CONDITIONS.**

Diamond 2.0 Matt is for those who believe beauty does not always need to shine. With punch and linear detailing, it quietly builds strength into spaces. Durable, elegant and eternal, it is crafted for architects, trusted by builders and loved in every design story.

simero.in



HYPER REALISTIC DEPTH WITH PRECISION LIKE NO OTHER

Feel the realistic punch effect that enhance your decor and bring aesthetic vibes. It's linear detailing is highly accurate with indentation that is nowhere seen before.



CREATIVE SPACE

APPLICATION FEATURES CRAFTED FOR FLEXIBILITY

We shape surfaces using next-generation technology and a highly skilled R&D team, resulting in elite features. This has led to the creation of surfaces that stand the test of time.



Low Water
Absorption Rate



Resistance
To Thermal
Shock



Stain
Resistance



UV
Resistance



Scratch
Resistance



Chemical
Resistance



Easy To
Install



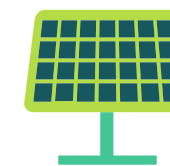
Frost
Resistance



We Recycle
Materials Annually
9000 MT



Reduce Carbon(CO₂)
Emissions Annually
2380 MT



Powered By
Solar Energy

संरक्ष प्रकृतिं जीवनाय



SUSTAINABILITY IS NECESSITY NOT LUXURY

That's why every tile we create follows a sustainable approach. As a Green Certified company, we take responsibility for the environment seriously. From eco-conscious manufacturing processes to energy-efficient production methods, everything we do is designed to reduce impact and preserve nature.



-50%
Less water uses



-25%
Less Energy Consumption

INDEX OF
CONTEXT

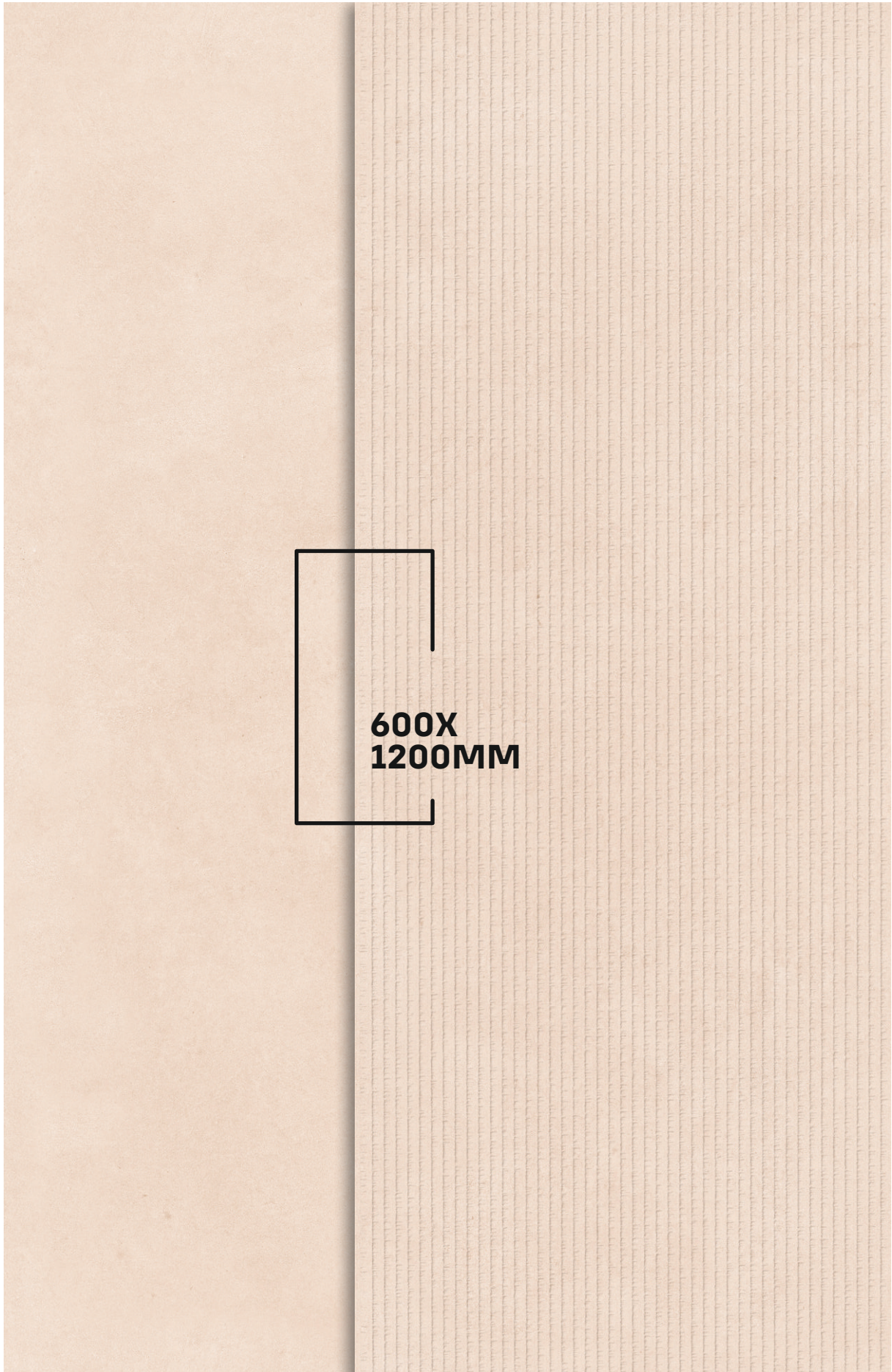


DIAMOND2.0
DURABLE & STRONG SURFACE

SIMERO[®]
CERAMICS

DIAMOND BLUSH





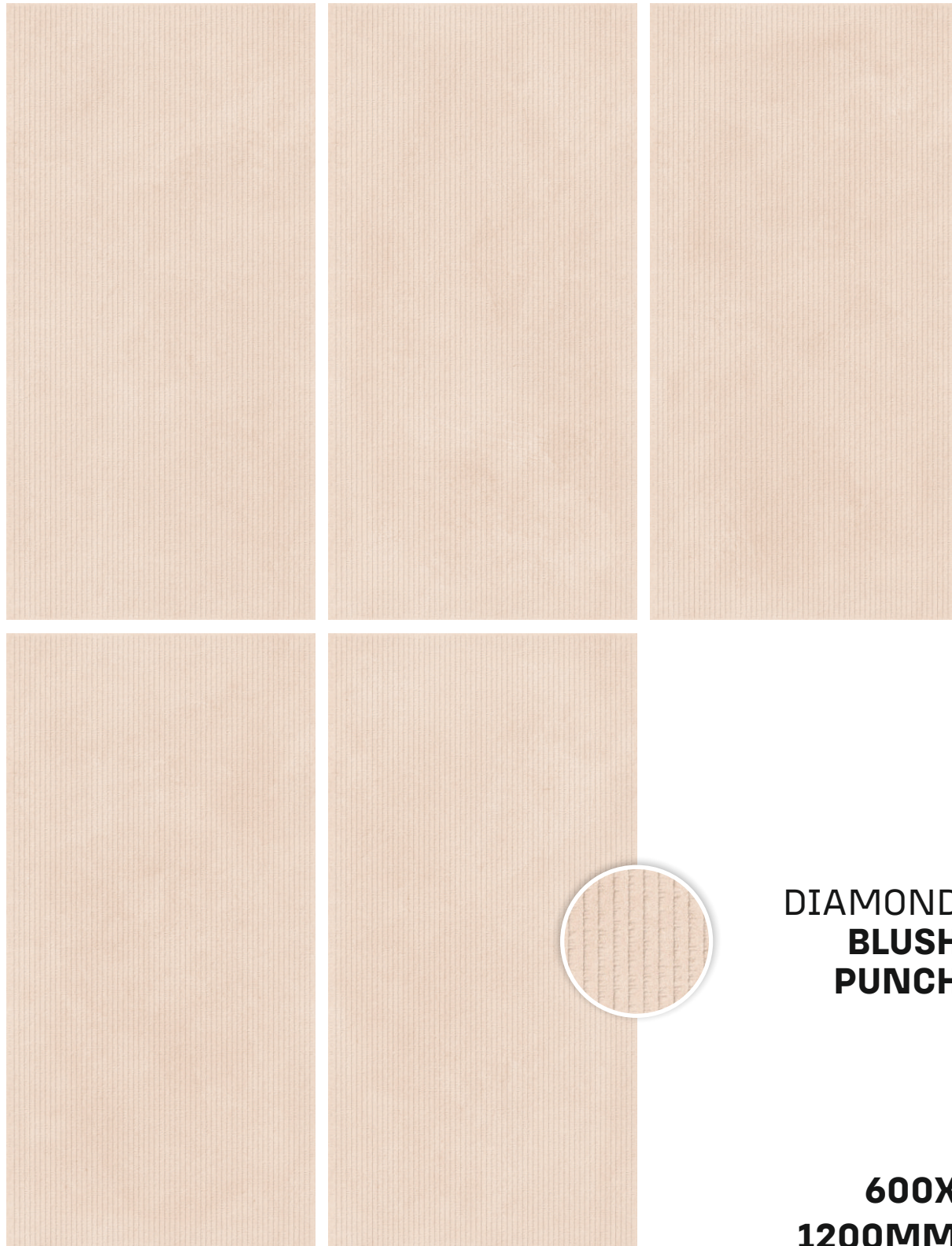
simero.in

SIMERO[®]
CERAMICS



LUX
SURFACE

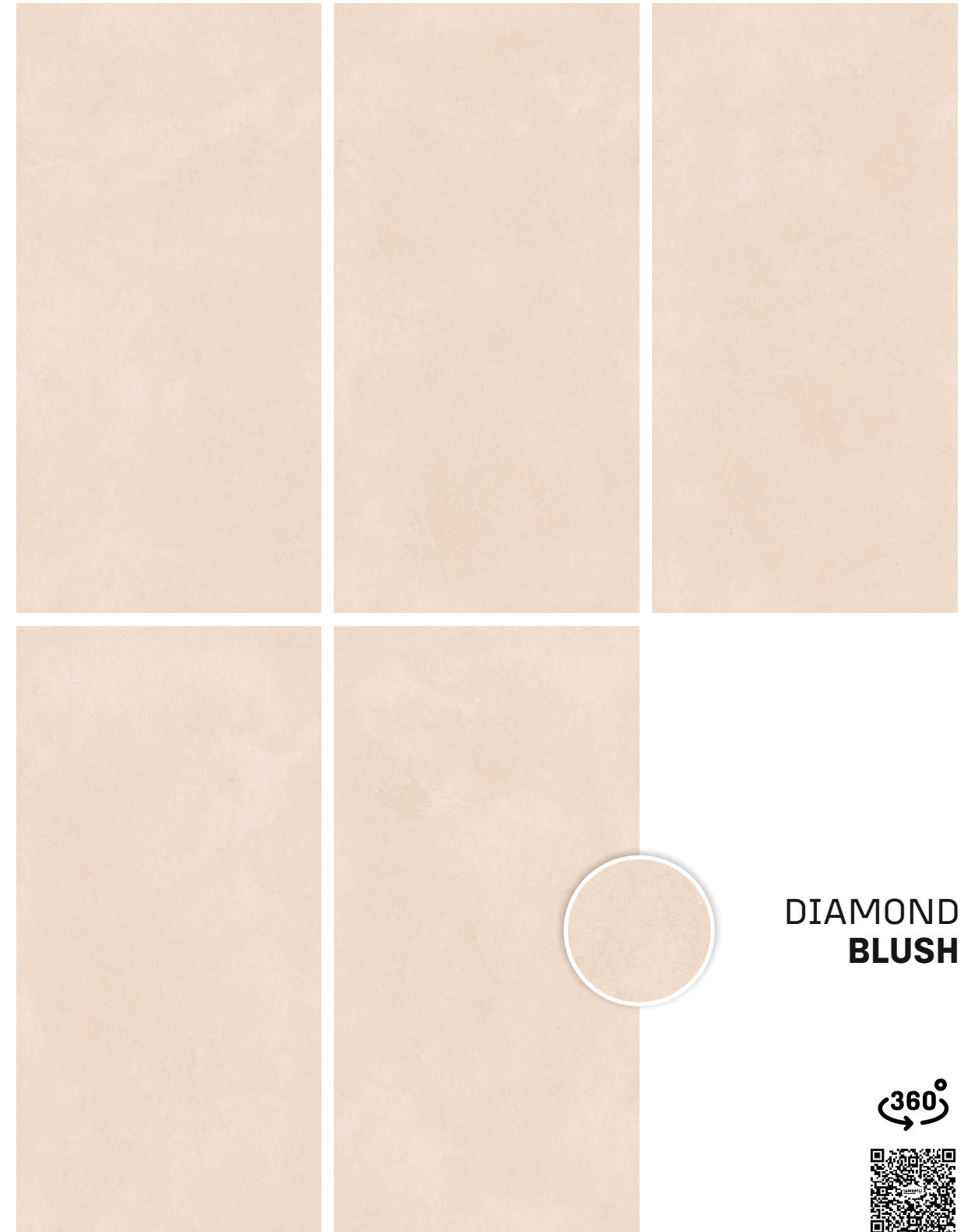
DIAMOND2.0
DURABLE & STRONG SURFACE



DIAMOND
**BLUSH
PUNCH**

**600X
1200MM**

LUX **PUNCH**, RANDOM: **05**



DIAMOND
BLUSH



LUX **SURFACE**, RANDOM: **05**

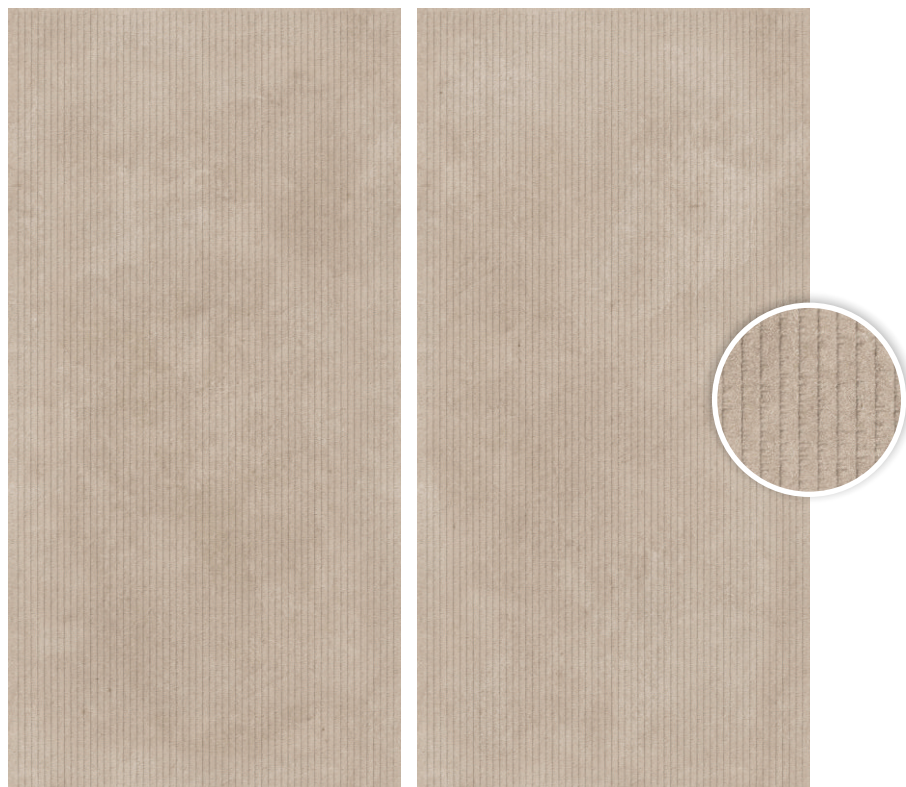
DIAMOND2.0
DURABLE & STRONG SURFACE

SIMERO[®]
CERAMICS

DIAMOND BUFF

600X
1200MM

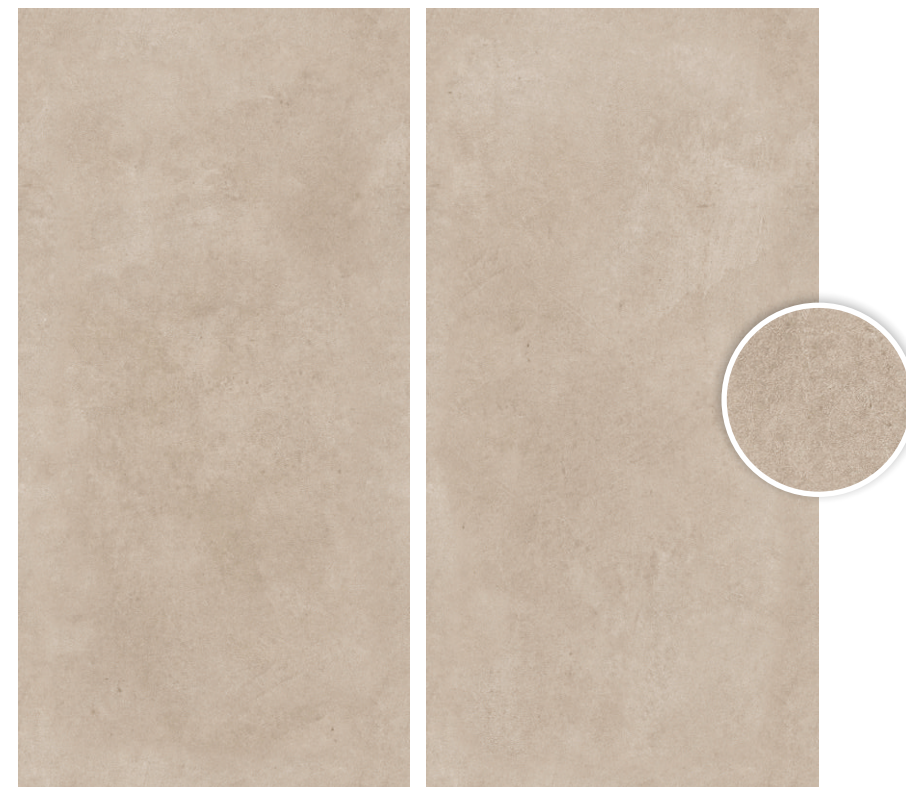




DIAMOND
**BUFF
PUNCH**

**600X
1200MM**

LUX **PUNCH**, RANDOM: **05**



DIAMOND
BUFF



LUX **SURFACE**, RANDOM: **05**

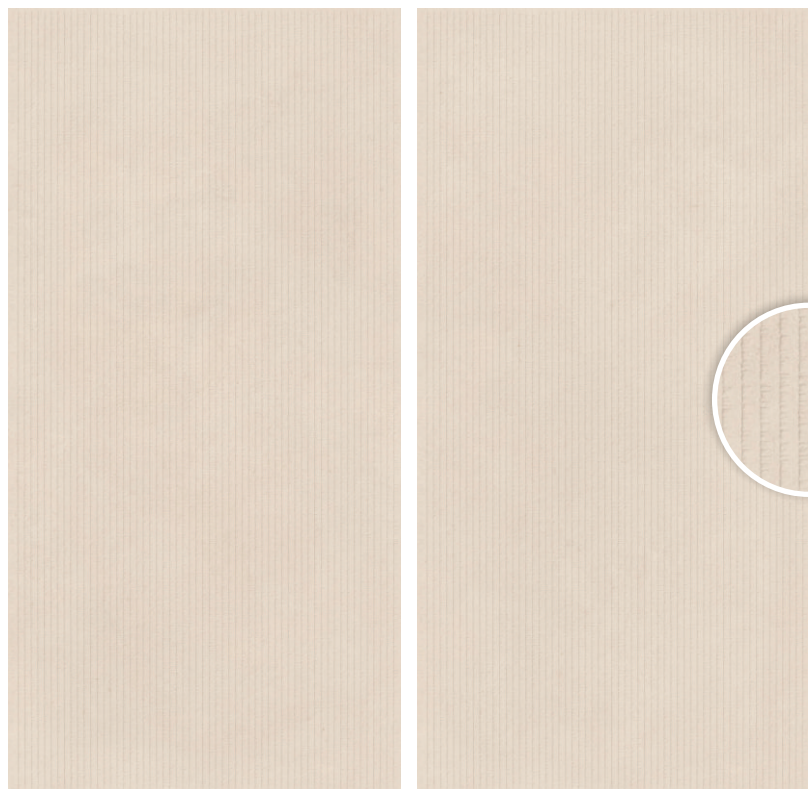
DIAMOND2.0
DURABLE & STRONG SURFACE

SIMERO[®]
CERAMICS

DIAMOND CREMA

**600X
1200MM**

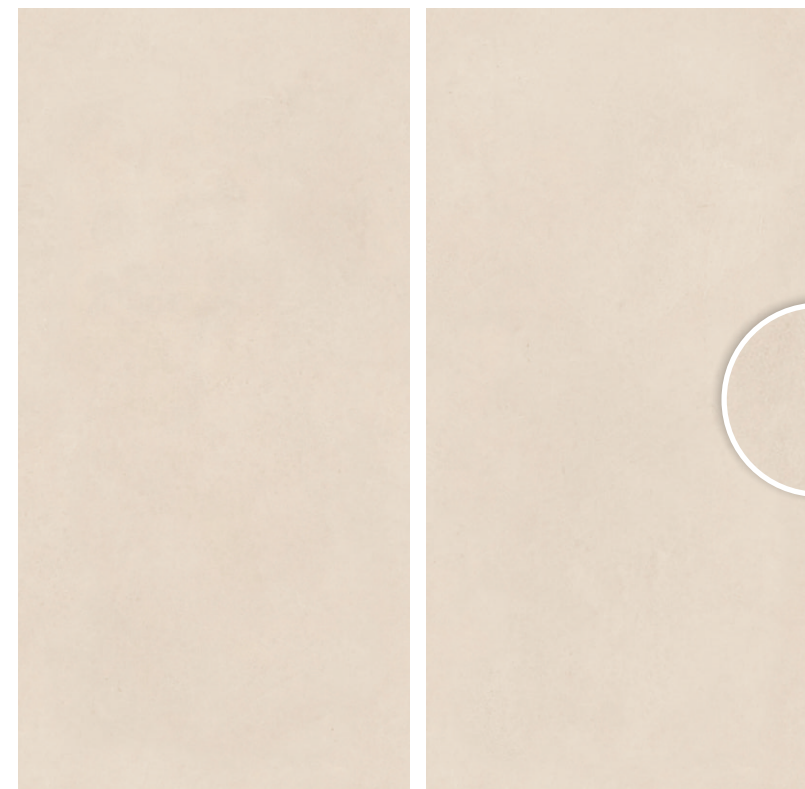




DIAMOND
**CREMA
PUNCH**

**600X
1200MM**

LUX **PUNCH**, RANDOM: **05**



DIAMOND
CREMA



LUX **SURFACE**, RANDOM: **05**

DIAMOND 2.0
DURABLE & STRONG SURFACE

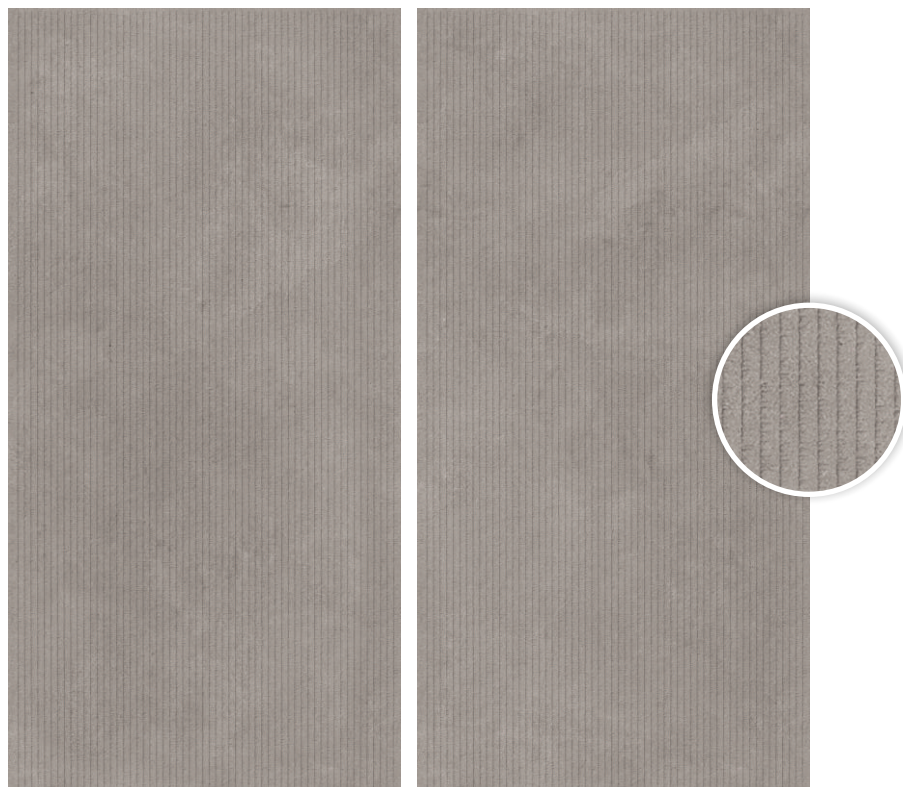
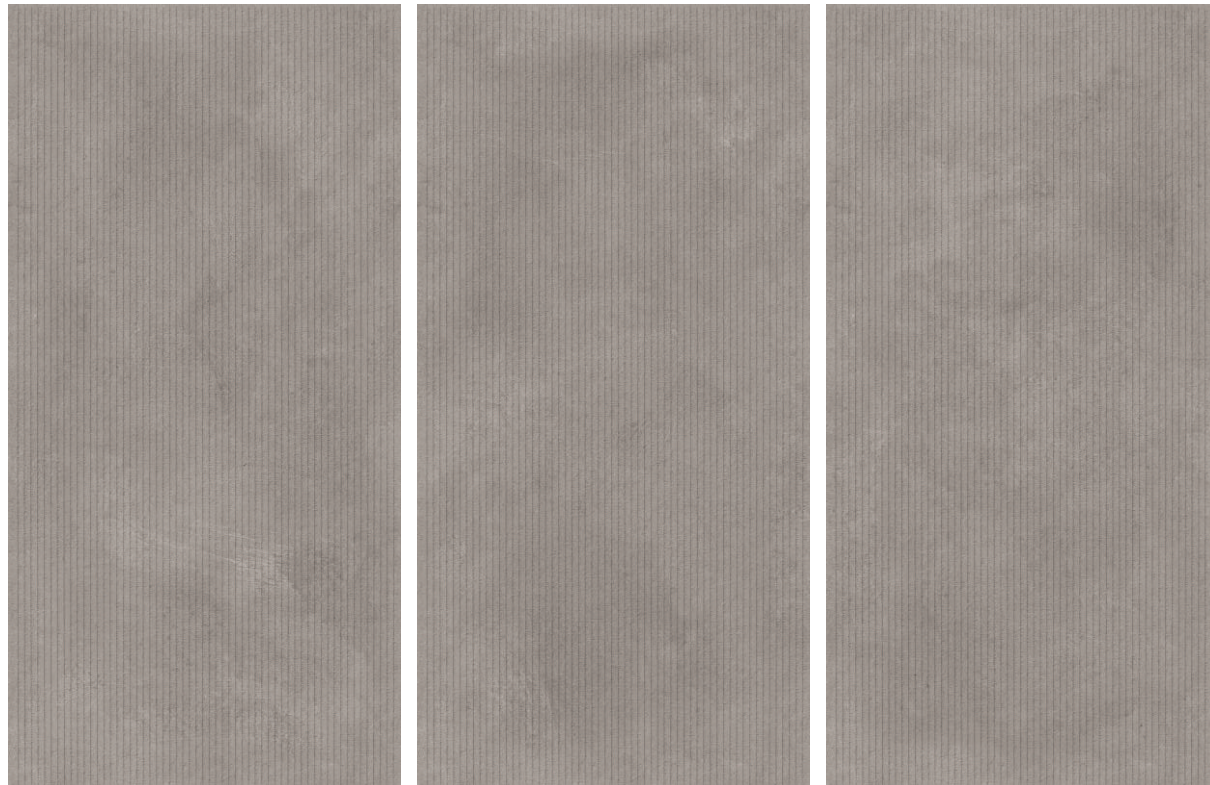
SIMERO[®]
CERAMICS

DIAMOND GRIS





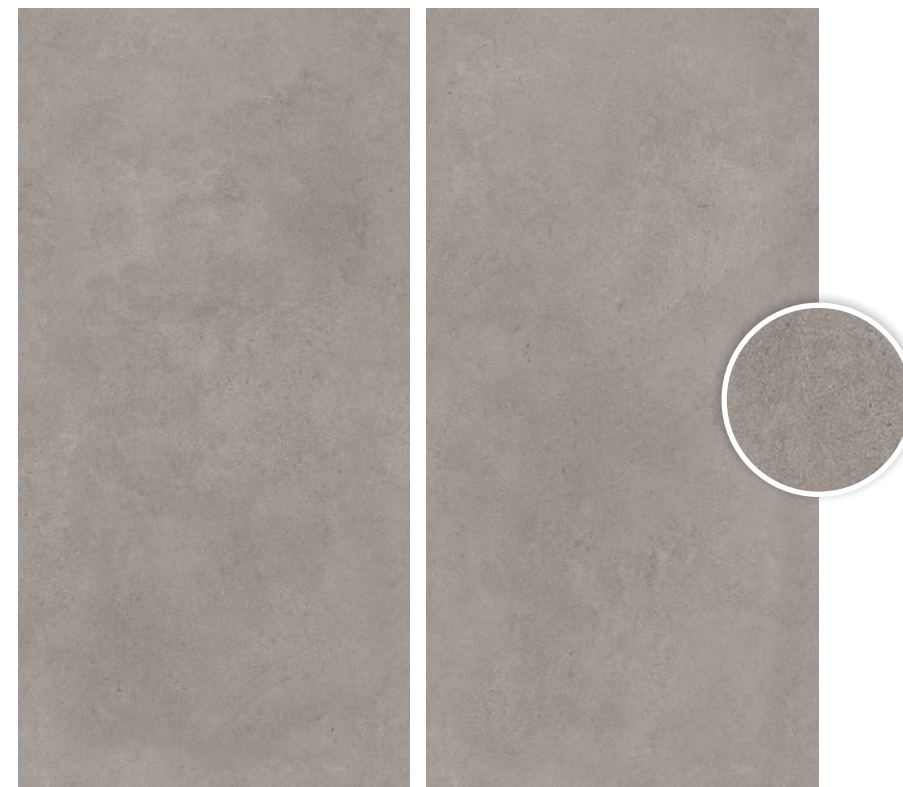
**600X
1200MM**



DIAMOND
GRIS
PUNCH

600X
1200MM

LUX **PUNCH**, RANDOM: **05**



DIAMOND
GRIS

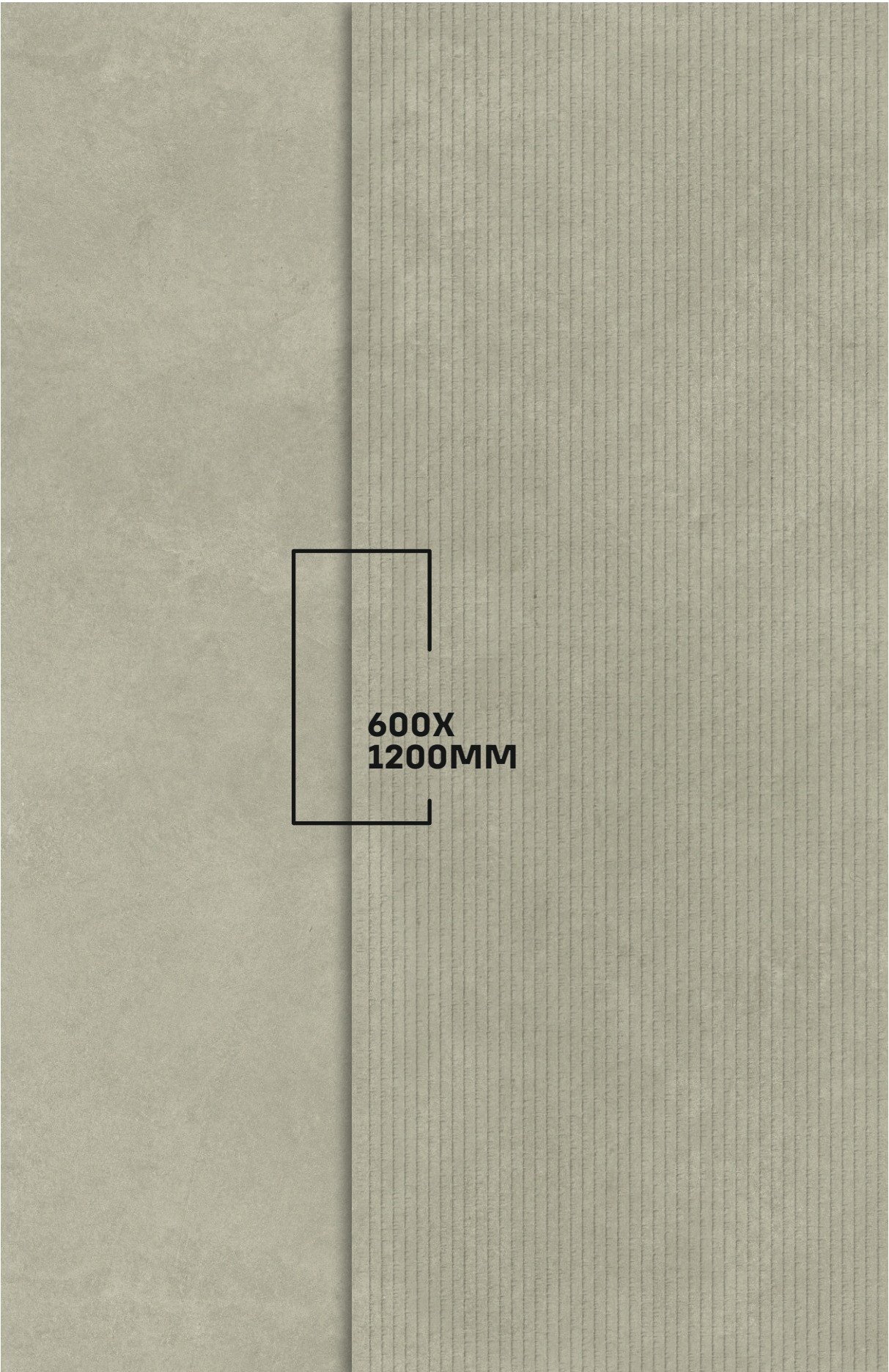


LUX **SURFACE**, RANDOM: **05**

DIAMOND2.0
DURABLE & STRONG SURFACE

SIMERO[®]
CERAMICS

DIAMOND PISTA



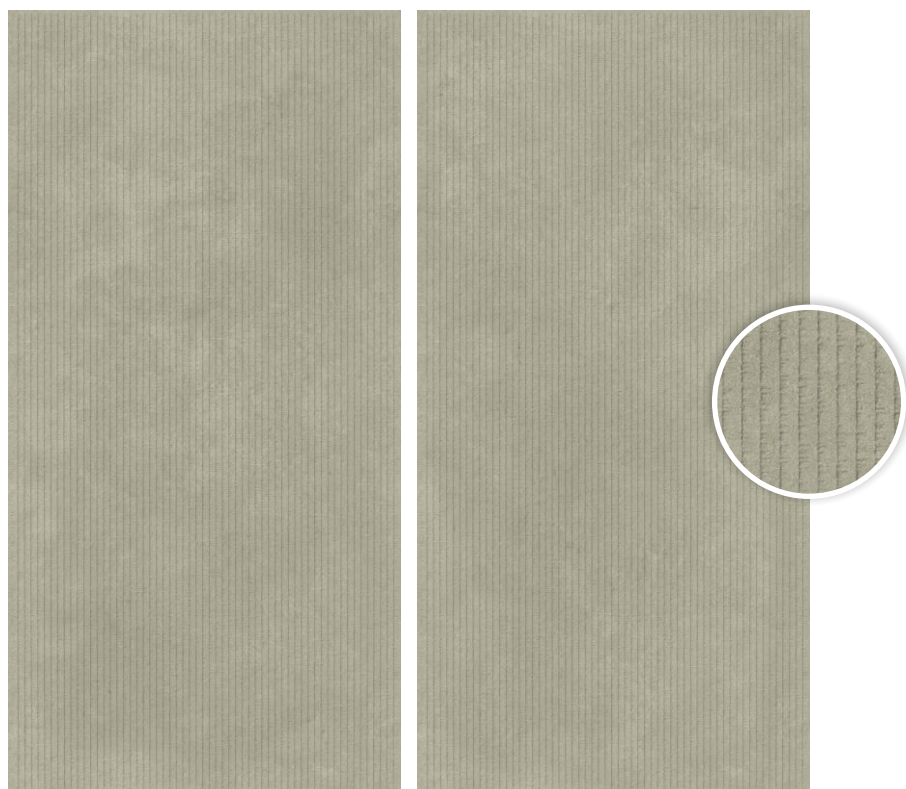
simero.in

SIMERO[®]
CERAMICS



LUX
SURFACE

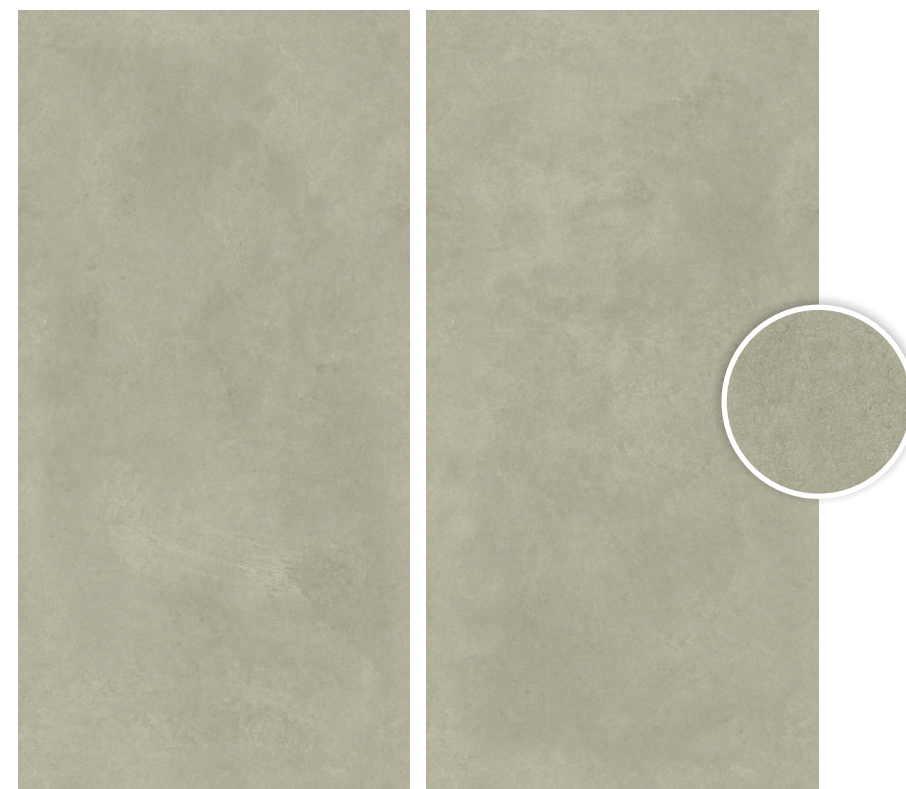
DIAMOND 2.0
DURABLE & STRONG SURFACE



DIAMOND
**PISTA
PUNCH**

**600X
1200MM**

LUX **PUNCH**, RANDOM: **05**



DIAMOND
PISTA



LUX **SURFACE**, RANDOM: **05**

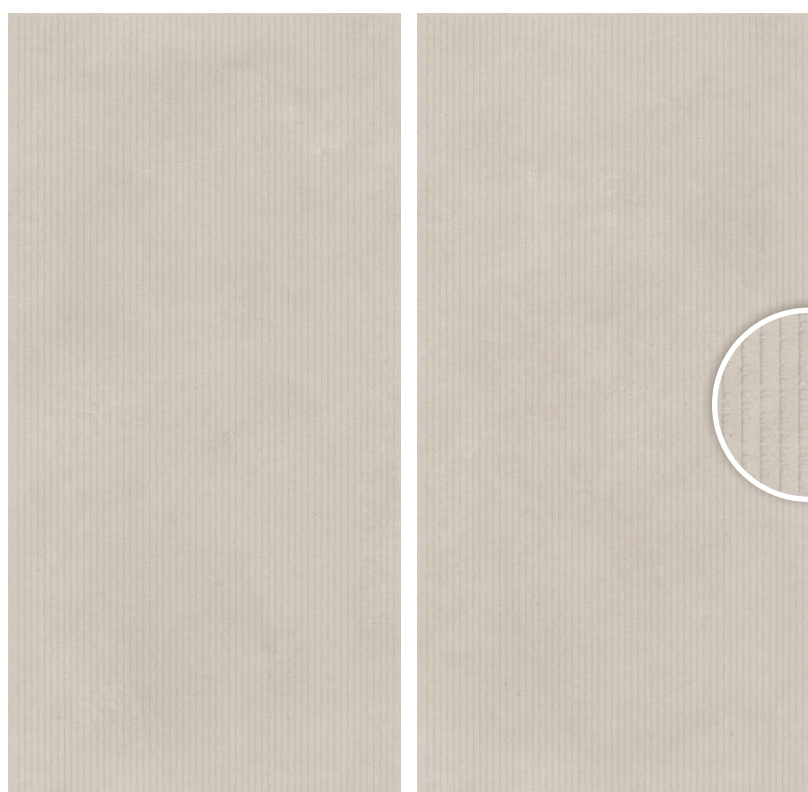
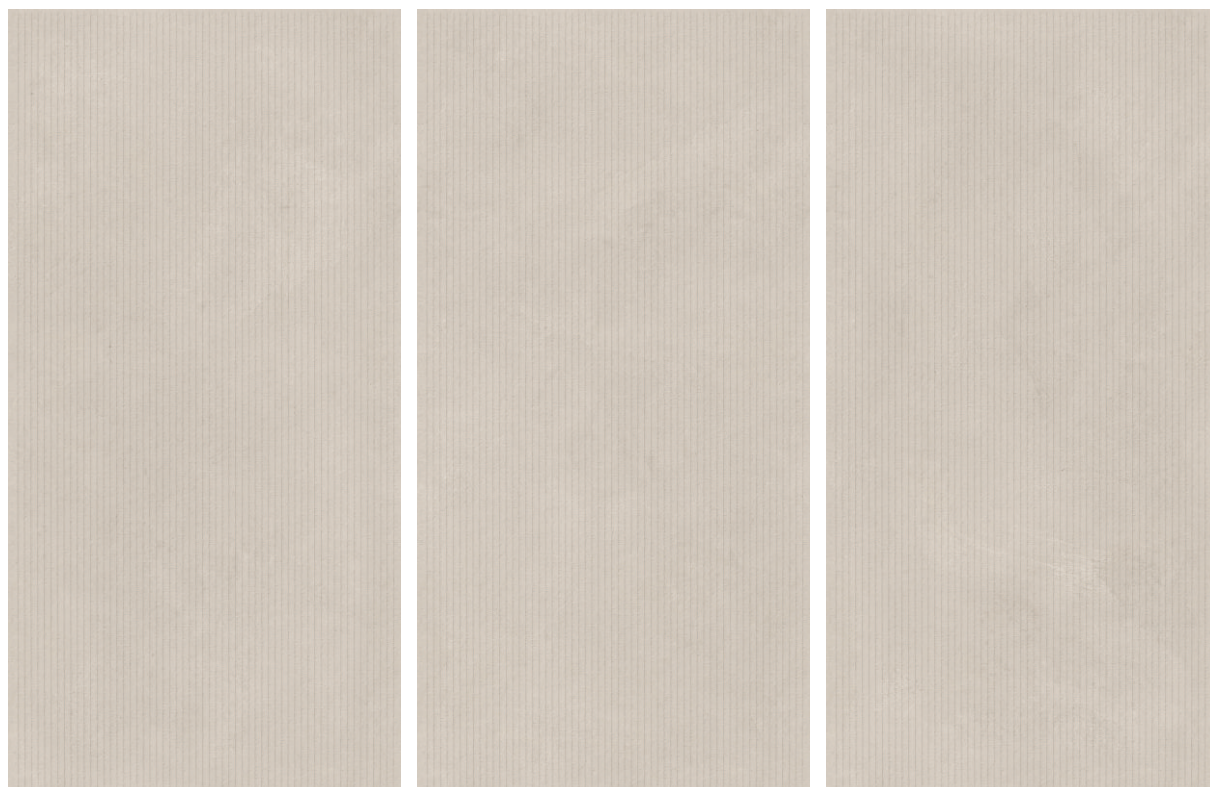
DIAMOND 2.0
DURABLE & STRONG SURFACE

SIMERO[®]
CERAMICS

DIAMOND SMOKE

**600X
1200MM**

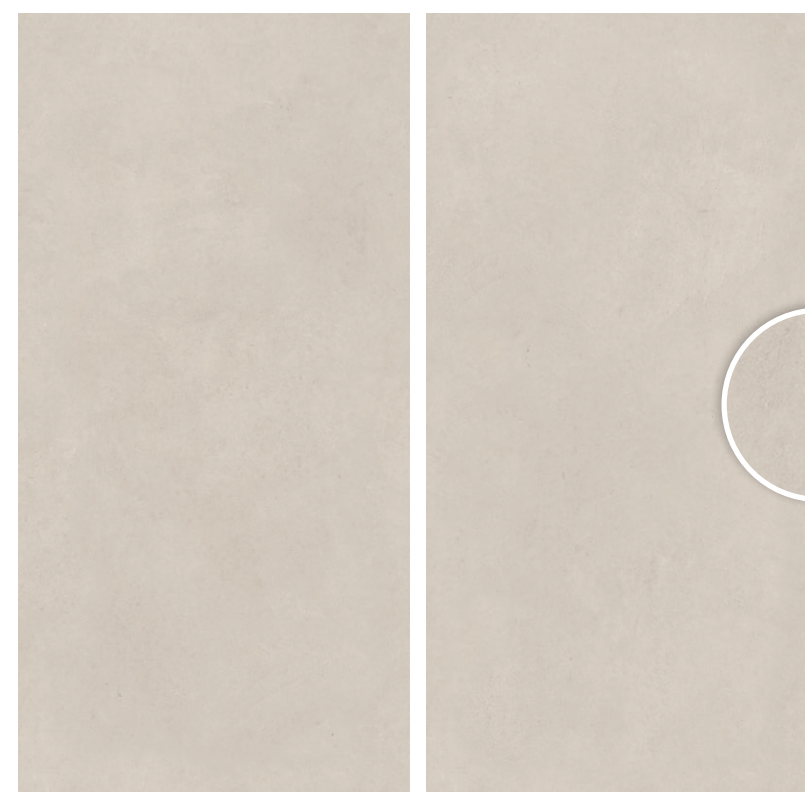
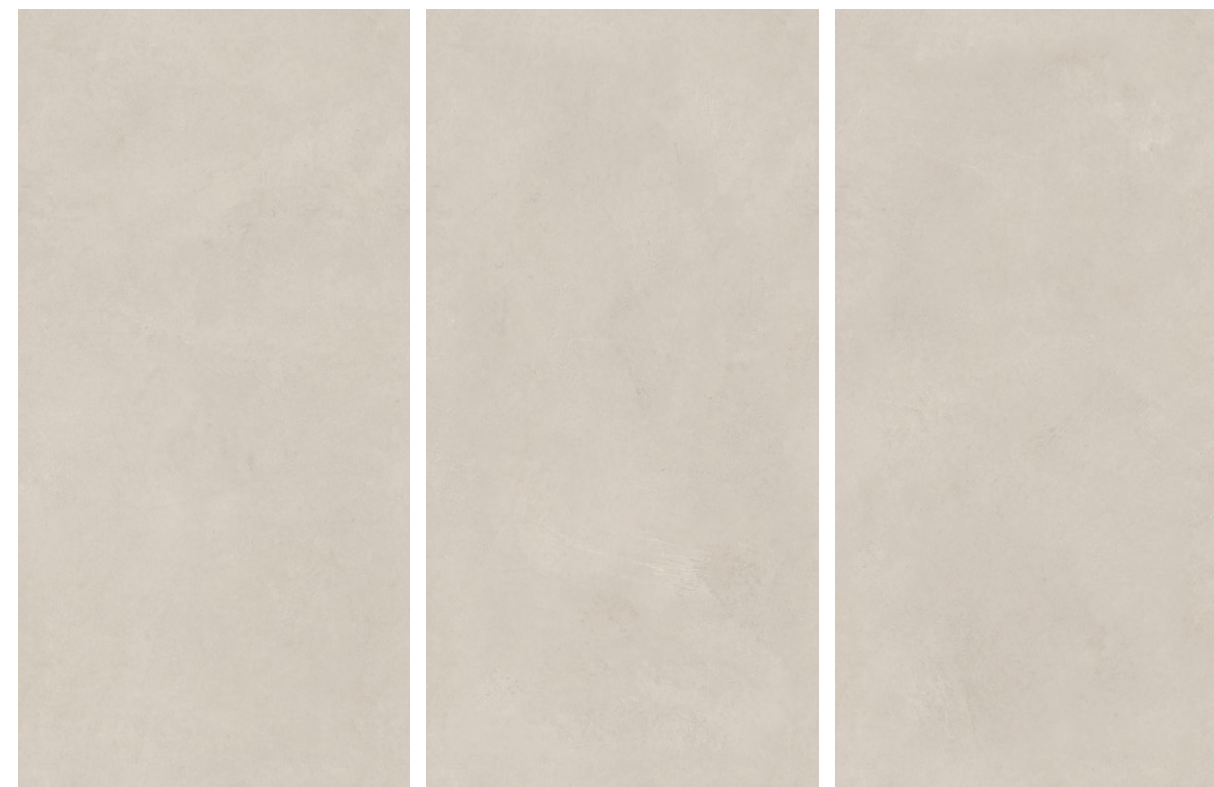




DIAMOND
**SMOKE
PUNCH**

**600X
1200MM**

LUX **PUNCH**, RANDOM: **05**



DIAMOND
SMOKE

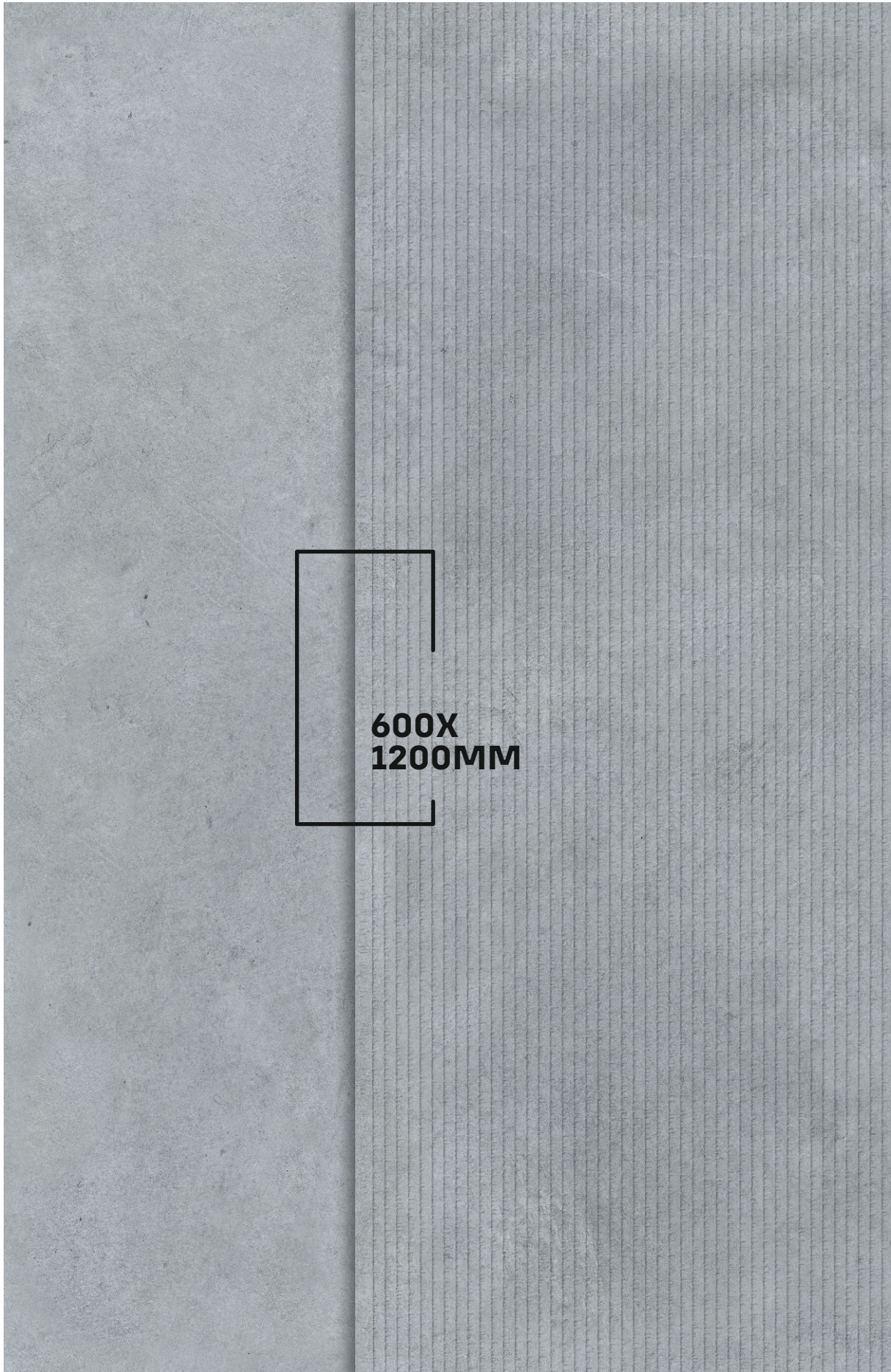


LUX **SURFACE**, RANDOM: **05**

DIAMOND20
DURABLE & STRONG SURFACE

SIMERO[®]
CERAMICS

DIAMOND SKY



600X
1200MM

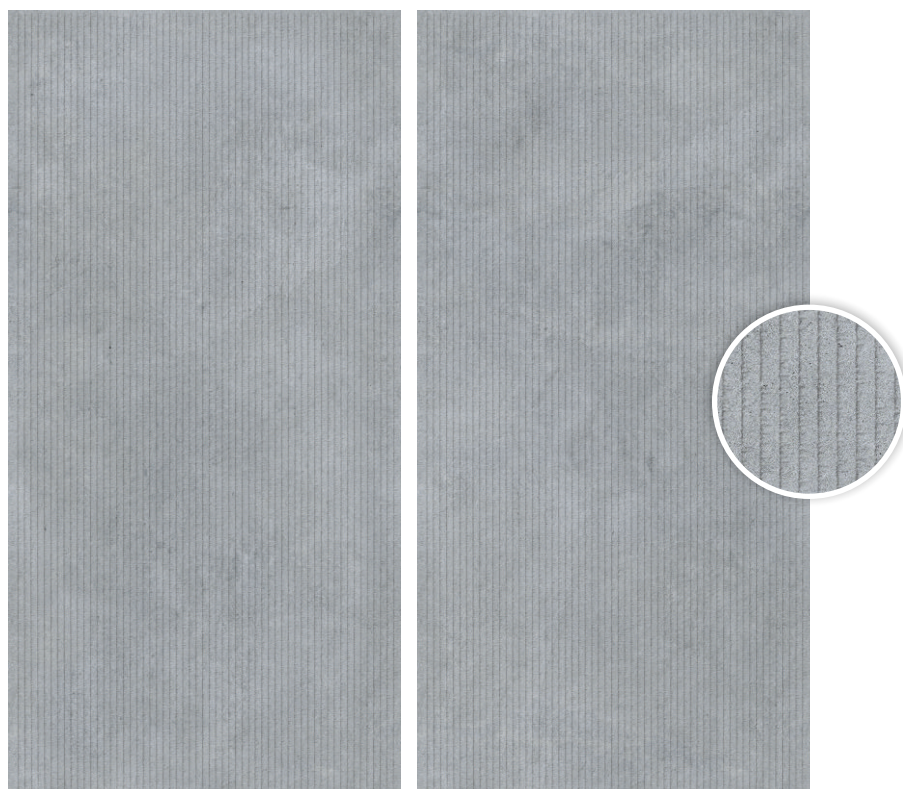
SIMERO[®]
CERAMICS



LUX
SURFACE

DIAMOND 2.0
DURABLE & STRONG SURFACE

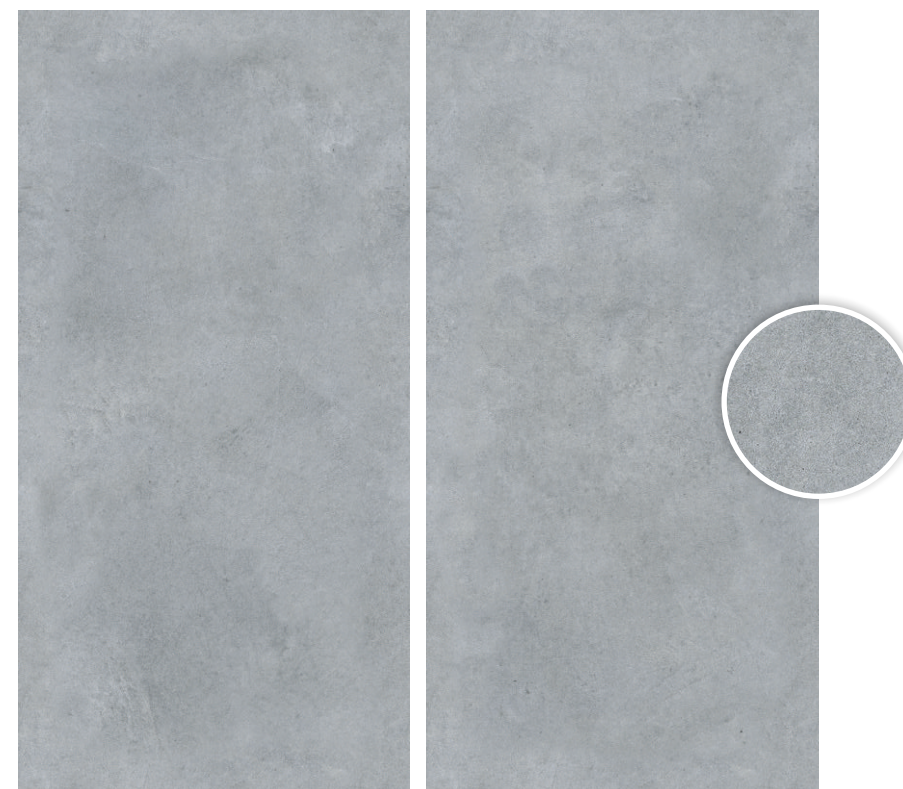
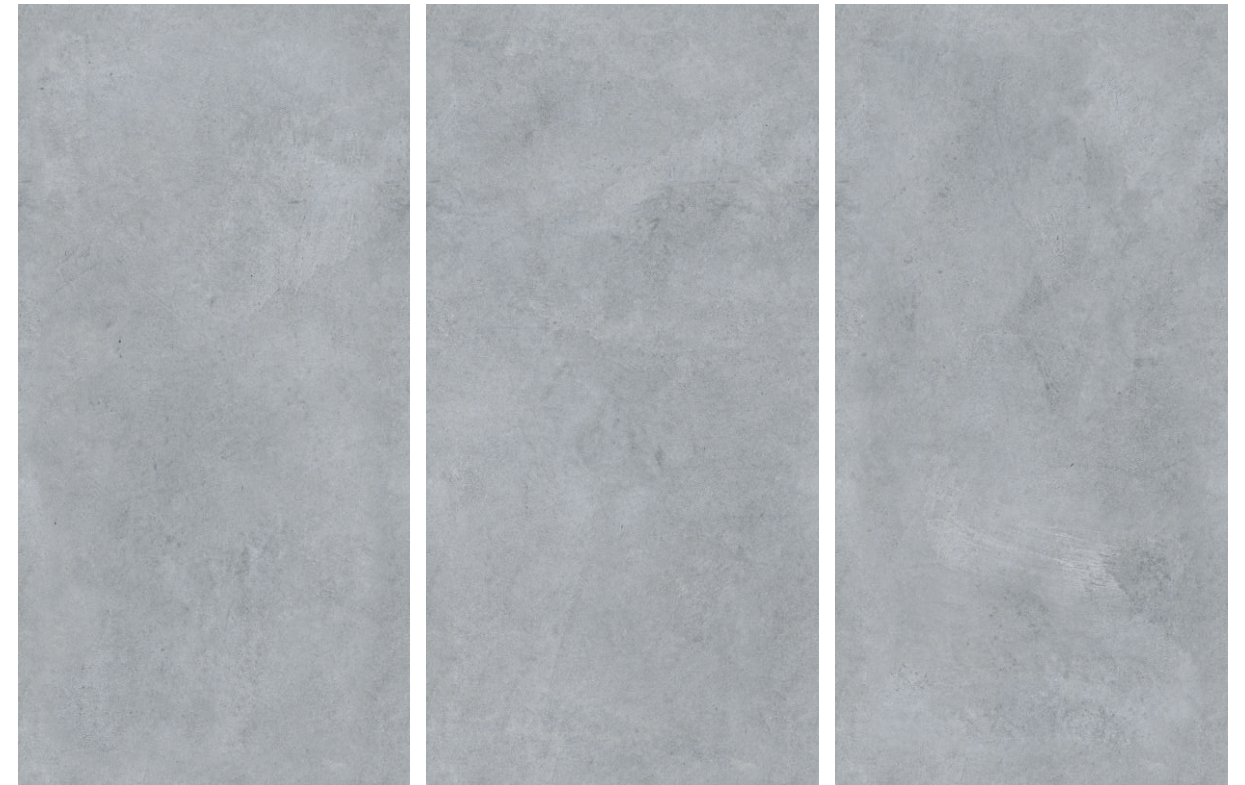
simero.in



DIAMOND
**SKY
PUNCH**

**600X
1200MM**

LUX **PUNCH**, RANDOM: **05**



DIAMOND
SKY



LUX **SURFACE**, RANDOM: **05**



Head Office:

**Behind Indian Oil Petrol Pump,
Morbi-Halwad Road, State Highway No. 22,
Nichi-Mandal, Morbi, Gujarat - 363 641.**

Simero Exhibition Center 2.0 Ahmedabad:

1487, S.G Highway, cross road, near
gota, Opp. Adani CNG pump, Gota,
Ahmedabad, Gujarat - 382 481

Simero Exhibition Center 4.0 Mumbai:

Gala No. 1-Q, Ground Floor, Shree Laxmi Ind.
Premises, Laxmi Ind. Estate, New link road,
Andheri west, Mumbai, Maharashtra - 400 053

Customer Care: +91 81412 12000

Simero Exhibition Center Morbi:

Behind Indian Oil Petrol Pump,
Morbi-Halwad Road, State Highway No. 22,
Nichi-Mandal, Morbi, Gujarat - 363 641.

Simero Exhibition Center 3.0 Surat:

A-66-67-68 GF & FF S.K Ind. Area, Survey
No. 62, Nr. Sosiyo Circle, Nr. Govala, Udhana
Magdalla Road, Surat, Gujarat - 395 017

Simero Exhibition Centre 5.0 Delhi:

E-13, Radhey Shyam Mandir Marg,
Block E, Mansarovar Garden,
New Delhi, Delhi - 110 027

simero.in